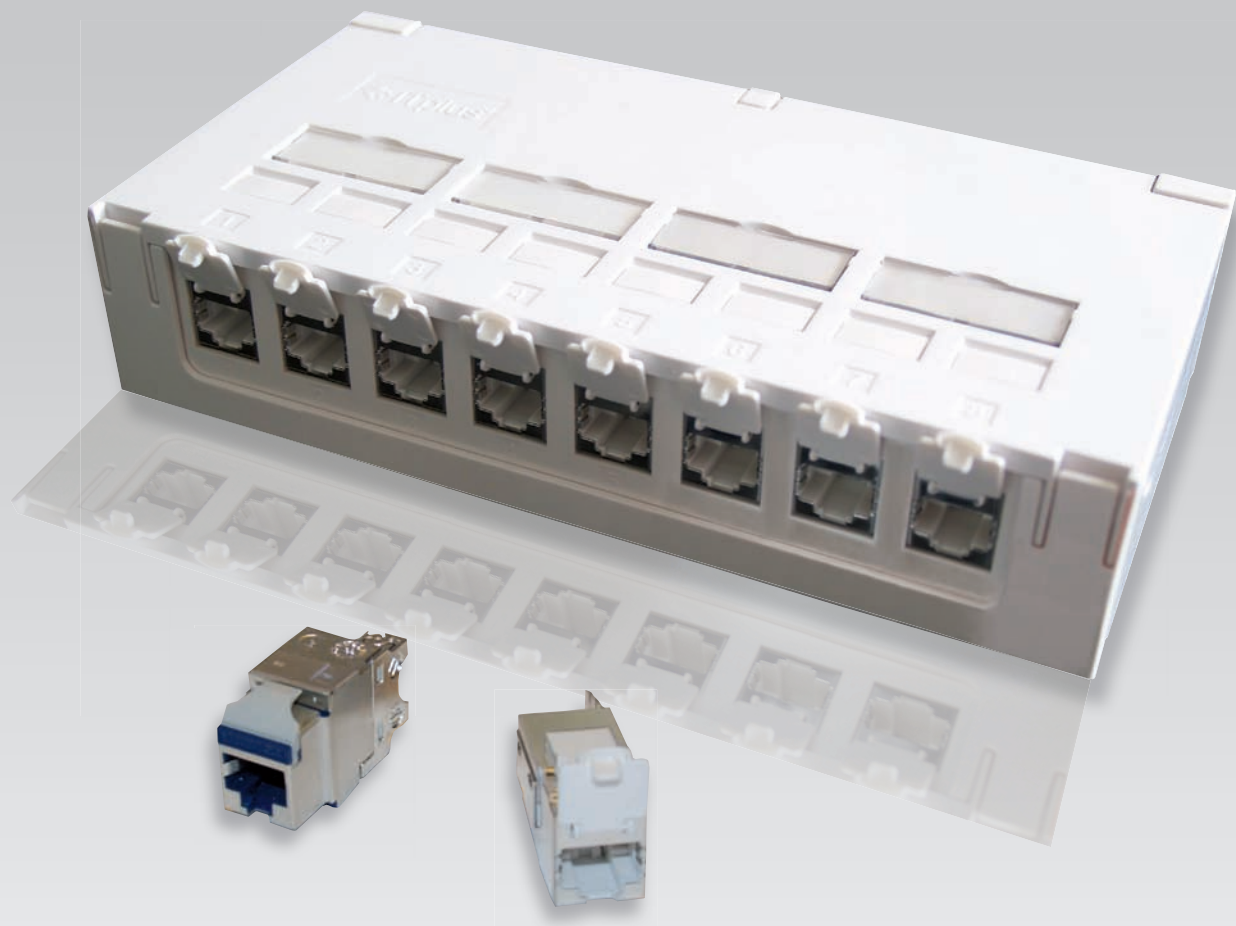




# ITplus<sup>®</sup>

## Mini AP connection box



- **Compact size** - *only 195 mm wide*
- **Clearly structured** - *by individual labelling and colour coding*
- **Keystone compatible** - *for miscellaneous applications*
- **Cost effective** - *the economic solution for small networks*
- **Expandable** - *trough modular design*

---

**ELBRO AG**

Swiss Technology Company

GewerbestraÙe 4

CH-8162 Steinmaur/Switzerland

Phone: +41 44 854 73 00

Fax: +41 44 854 73 01

Internet: [www.elbro.com](http://www.elbro.com)

E-mail: [info@elbro.com](mailto:info@elbro.com)

---



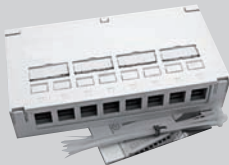
**Mini AP connection box, 8-way**

Networks with a small number of subscribers require simple and cost-effective distribution components without 19" cabinets and separate computer rooms. For this purpose, ELBRO offers a very special distribution unit, which is suitable as a marshalling rack, consolidation point (CP) or as a connecting unit for subscriber groups at the workplace. Up to 8 subscribers can be connected via the connection box. The distribution units can be mounted on the wall, the cable conduit and the DIN rail (with adapter) or simply can be placed on the table.



With the accessories, the Mini AP connection box can lined up or even stacked for future expansion of the network. Colour coding allows the allocation of different services to the ports.

**COZ-06 908-0 966 790 629**



**Mini AP connection box, 8-way**

for optional equipping with ITplus® or LANmark Keystone modular jacks  
8 cable inlets on the back side, incl. 8 cable ties  
Plastic housing, white (RAL 9010)  
Dimensions 195 x 100 x 41 mm

**L00040A0009 966 739 168**



**Grounding set**

for Mini AP connection box, incl. mounting material  
Length 30 cm

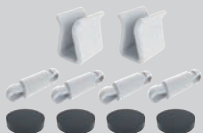
**H06000A0056 977 800 968**



**DIN rail adapter**

for Mini AP connection box, for mounting on DIN rail  
incl. mounting material

**H06011A0007 977 900 968**



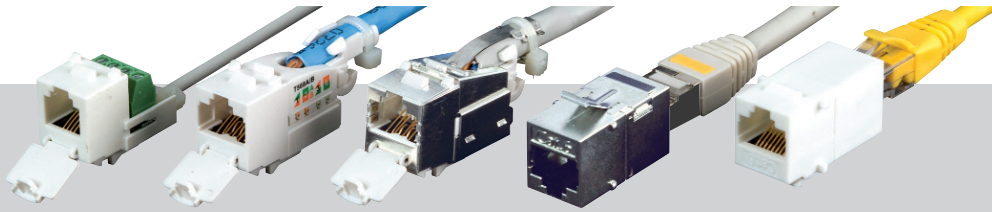
**Accessories set**

for Mini AP connection box  
Set with 2 connecting brackets and 4 spacers and  
4 self-adhesive rubber feet

**Labels for colour coding, pack of 100 pcs**



Data	E-No.	couleur	Phone	E-No.	couleur
B00111A0019	977 902 158	red	B00111A0028	977 903 158	red
B00111A0018	977 902 168	yellow	B00111A0027	977 903 168	yellow
B00111A0023	977 902 148	green	B00111A0025	977 903 148	green
B00111A0024	977 902 128	blue	B00111A0026	977 903 128	blue



## Components ITplus®

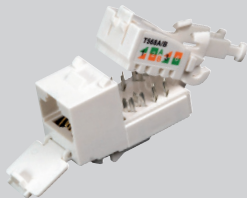
**COU-90 010-61 966 702 766**

### Jack ITplus® RJ45 Cat.6A 10G, unshielded

For setting up Class D and E transmission links with up to four plug connections inline. Fulfils the requirements of ISO/IEC 11801 (2), EN 50173-1 (2), IEC 60603-7 and TIA/EIA568B.2-10 Cat.6A. For wire diameter AWG 23 - 26. Parallel pair connection without crossing in accordance to EIA/TIA 568A/B. Strain relief of cable by means of included cable tie individual, strain relief of wires, up to 20 re-connection cycles.

Gold-plated nickel contacts, for more than 1000 plugging cycles.

With integrated and captive dust protection. For Keystone slots, fast and easy installation.



**COS-90 010-61 966 702 866**

### Jack ITplus® RJ45 Cat.6A 10G, shielded

For setting up Class D and E transmission links with up to four plug-in connections inline. Fulfils the requirements of ISO/IEC 11801 (2), EN 50173-1 (2), IEC 60603-7 and TIA/EIA568B.2-10 Cat.6A. For wire diameter AWG 23 - 26. Parallel pair connection without crossing in accordance to EIA/TIA 568A/B. Strain relief of cable by means of included cable tie individual, strain relief of wires, up to 20 re-connection cycles.

Gold-plated nickel contacts, for more than 1000 plugging cycles.

With integrated and captive dust protection. For Keystone slots, fast and easy installation.



**SOH-12 101 977 801 048**

### Jack ITplus® RJ11, screw connection

For connecting cables (U72) for ADSL, ISDN and POTS.

Meets requirements of IEC 60512-7.

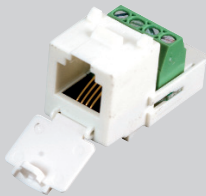
Screw connection with spring terminals enables parallel connection of wire diameters 0.5 – 1.0 mm<sup>2</sup>

AWG 22 - 27. Four contacts (2,3,4,5) are occupied (USOC RJ11).

Strain relief by means of cable tie, up to 20 re-connection cycles.

Gold-plated nickel contacts, for more than 1000 plugging cycles.

With integrated and captive dust protection. For Keystone slots, fast and easy installation.



**IEU-11 100 977 830 098**

### Coupler ITplus® RJ45 Cat.6, unshielded

For setting up consolidation points and workplace boxes with two-sided RJ45 connection.

Fulfils Cat.6/Class E Permanent Link and Channel requirements of ISO/IEC 11801, EN 50173, IEC 60603-7 and TIA/EIA 568B.2.

Gold-plated nickel contacts, for more than 750 plugging cycles. For Keystone slots, fast and easy installation.



**IES-11 100 977 800 098**

### Coupler ITplus® RJ45 Cat.6, shielded

For setting up consolidation points and workplace boxes with two-sided RJ45 connection.

Fulfils Cat.6/Class E Permanent Link and Channel requirements of ISO/IEC 11801, EN 50173, IEC 60603-7 and TIA/EIA 568B.2.

Gold-plated contacts on nickel, for more than 750 plugging cycles.

Die cast housing with grounding flag. For Keystone slots, fast and easy installation.

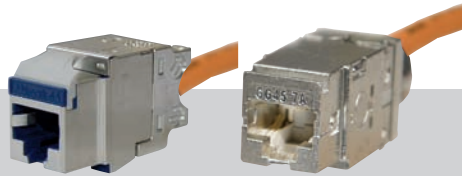


**COU-93 001-61 966 733 808**

### Dummy insert ITplus®

Cover element for Keystone reserve slots, white.





## Components **LANmark**

**N420.66A-KS 978 800 109**

### Jack LANmark-6A EVO shielded 500 MHz

For setting up class EA transmission links.  
Fulfills TIA and ISO Cat6A cabling standards. Supports extremely short Cat6A channel configurations, such as those needed in data centres.  
(EN 50173-1; EN 50173-3; IEC 60603-7-5; IEC 60603-751; ISO 11801:2002 / A1:2008; TIA/EIA-568-B2-10)



**N420.67A-KS 978 800 209**

### Jack LANmark-6A EVO shielded 500 MHz for stranded wires

For setting up class EA transmission links.  
Fulfills TIA and ISO Cat6A cabling standards. Supports extremely short Cat6A channel configurations, such as those needed in data centres.  
(EN 50173-1; EN 50173-3; IEC 60603-7-5; IEC 60603-751; ISO 11801:2002 / A1:2008; TIA/EIA-568-B2-10)



**N420.735-KS 978 800 309**

### Jack LANmark-7A GG45 shielded 1000 MHz

For setting up class FA transmission links.  
The Cat7A jack with innovative GG45 interface, downward compatible for RJ45 plugs.  
Supports future 40 gigabit Ethernet transmission rates.  
(EN 50173-1; IEC 60603-7-5; ISO/IEC 11801)



**N420.736-KS 978 800 409**

### Jack LANmark-7A GG45 shielded 1000 MHz for stranded wires

For setting up class FA transmission links.  
The Cat7A jack with innovative GG45 interface, downward compatible for RJ45 plugs.  
Supports future 40 gigabit Ethernet transmission rates.  
(EN 50173-1; IEC 60603-7-5; ISO/IEC 11801)



**COU-93 001-61 966 733 808**

### Dummy insert ITplus®

Cover element for Keystone reserve slots, white.



Sales:

**ELBRO AG**

Swiss Technology AG

Gewerbestraße 4

CH-8162 Steinmaur/Switzerland

Phone: +41 44 854 73 00

Fax: +41 44 854 73 01

Internet: [www.elbro.com](http://www.elbro.com)

E-mail: [info@elbro.com](mailto:info@elbro.com)